

Test Case-08

Test Name: RJIL-IP-QA-DS-SYS-008

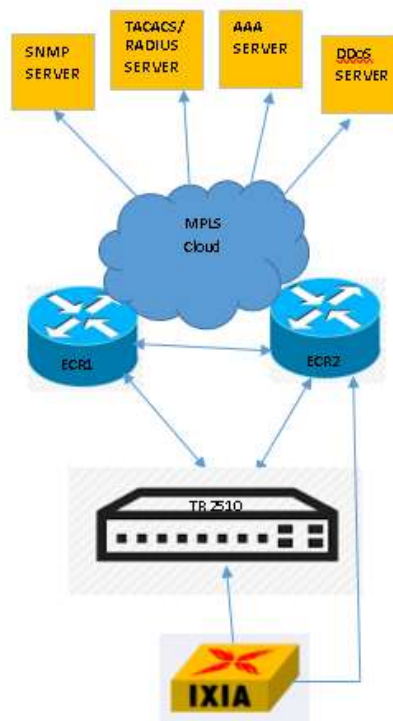
Test Objective: To check Support of static routes for IPv4 & IPv6.

Test Configuration:

Ip default –gateway A.B.C.D

Ipv6 default –gateway A: B

Test Set up (Including Pre requisites): Switch, ECR1, ECR2 and IXIA



Procedure: Connect switch to ECR1, ECR2 and IXIA

Action:

Response:

| | | | |
|----------|------------------------------------------------------|----------|---------------------------------------------------------------------------------------------------------------------|
| | | | |
| 1 | show ipv6 default-gateway and ping6 default gateway. | 1 | Default gateway for ipv6 is statically configure on switch. It should be visible and we should be able to piing it. |

Expected Result: Switch should be able to configure static routes for IPV4 and IPV6

Actual Result: Switch#show ipv6 default-gateway

Current IPv6 default router:

2405:200:1410:1010::81

Configured IPv6 default router:

2405:200:1410:1010::81

Default router set by DHVPv6:

Default-router list by ND:

```
-----
Gateway address      Interface
-----
```

***FE80::A2EC:F9FF:FE8B:BEBF v883**

Switch#

Switch#traceroute 8.8.8.8

traceroute to 8.8.8.8 (8.8.8.8), 30 hops max, 36 byte packets

1 192.168.1.11 0 ms 0 ms 10 ms

2 192.168.1.11 0 ms !H * 0 ms !H

Switch#